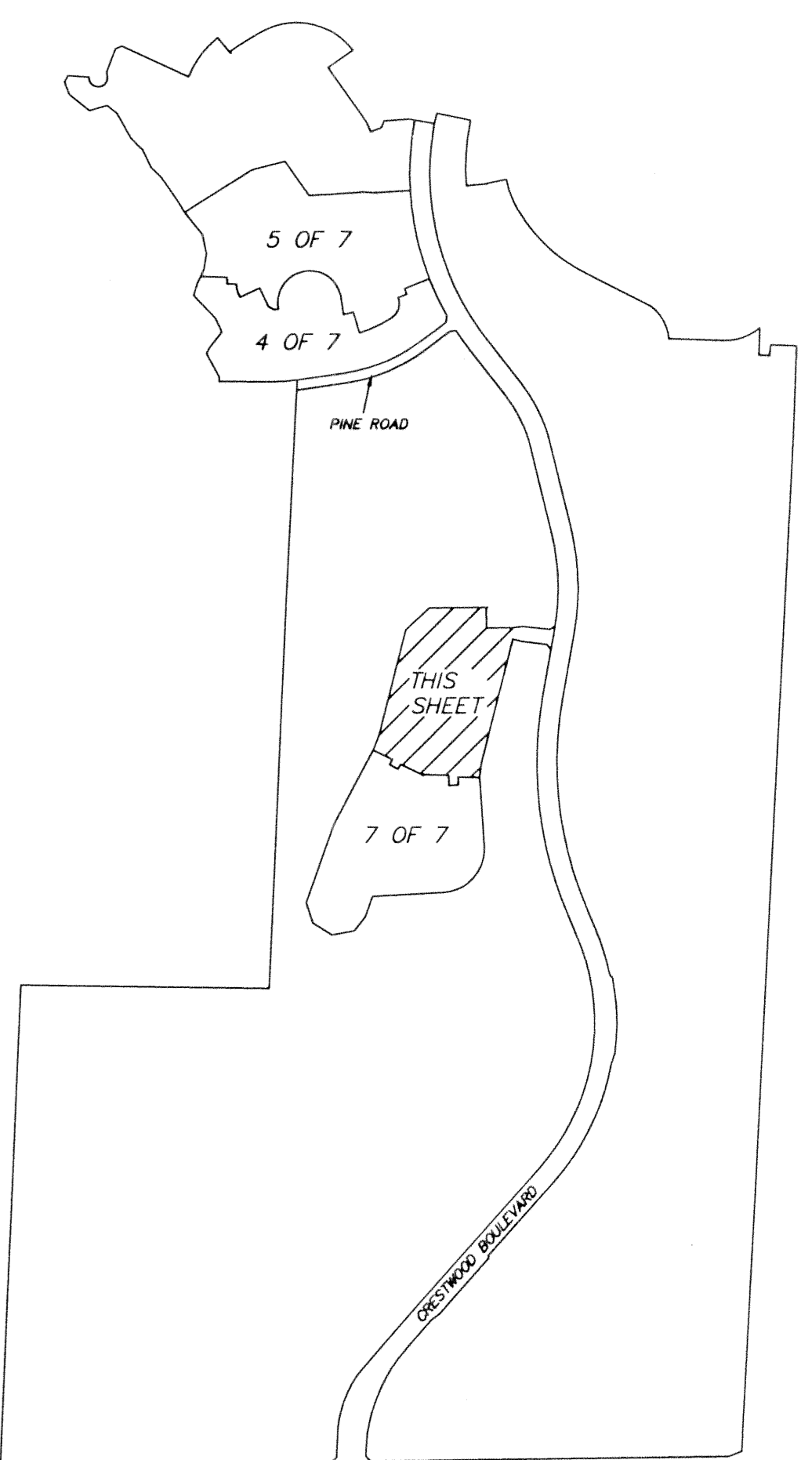
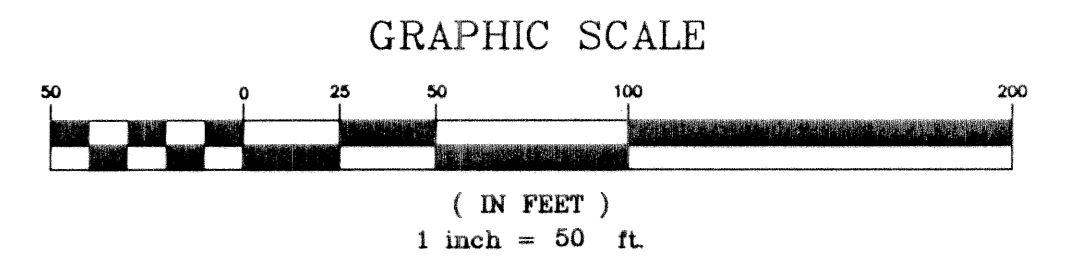
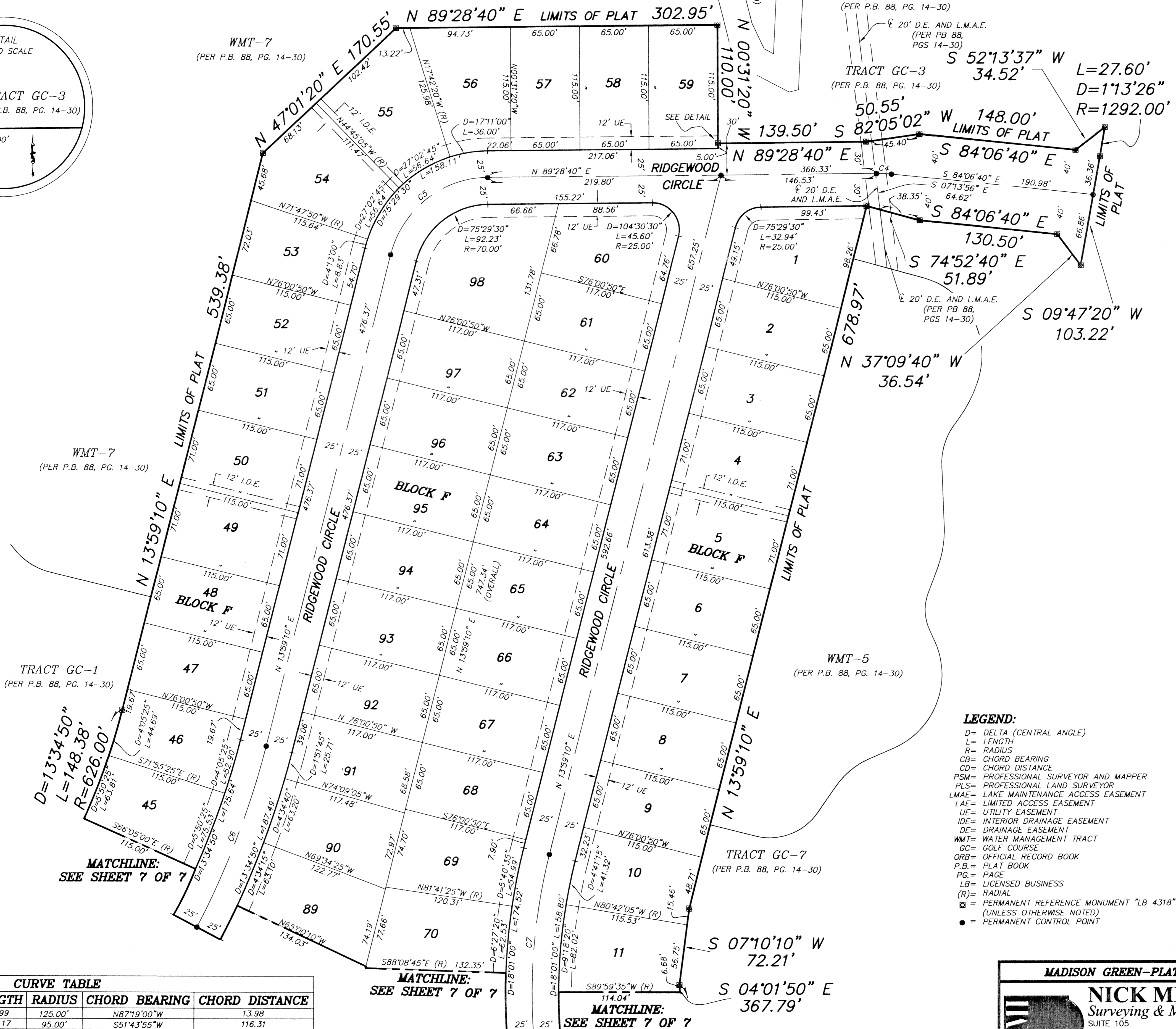
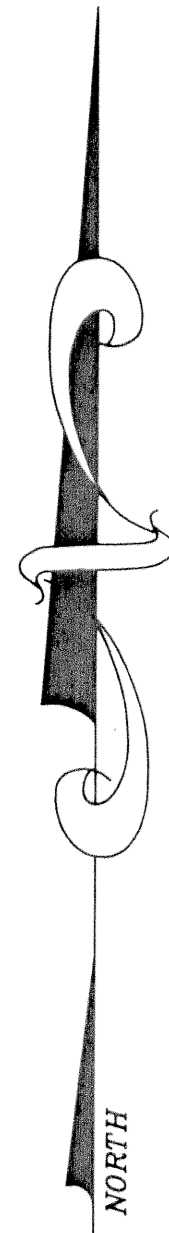
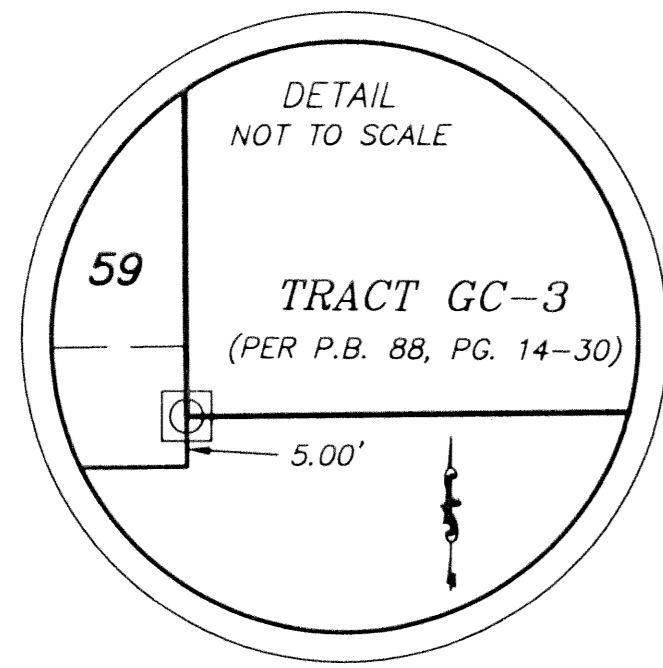


**MADISON GREEN-PLAT No. 1, PARCEL "F" AND PARCEL "J", REPLAT**  
 BEING A REPLAT OF ALL OF LOTS 1-115, INCLUSIVE, BLOCK "F", RIDGEWOOD COURT AND RIDGEWOOD CIRCLE,  
 AS SHOWN ON MADISON GREEN - PLAT No. 1, PARCEL "F", PARCEL "G" AND PARCEL "I", REPLAT AS RECORDED IN  
 PLAT BOOK 91, PAGES 33 THROUGH 42 OF THE PUBLIC RECORDS OF PALM BEACH COUNTY, FLORIDA AND PARCEL "J",  
 AS SHOWN ON MADISON GREEN - PLAT No. 1, AS RECORDED IN PLAT BOOK 88, PAGES 14 THROUGH 30 OF THE  
 PUBLIC RECORDS OF PALM BEACH COUNTY, FLORIDA. IN SECTIONS 15 AND 22, TOWNSHIP 43 SOUTH, RANGE 41 EAST  
 VILLAGE OF ROYAL PALM BEACH, PALM BEACH COUNTY, FLORIDA  
 JUNE 2001  
 SHEET 6 OF 7



- LEGEND:**
- D= DELTA (CENTRAL ANGLE)
  - L= LENGTH
  - R= RADIUS
  - CB= CHORD BEARING
  - CD= CHORD DISTANCE
  - PSM= PROFESSIONAL SURVEYOR AND MAPPER
  - PLS= PROFESSIONAL LAND SURVEYOR
  - LMAE= LAKE MAINTENANCE ACCESS EASEMENT
  - LAE= LIMITED ACCESS EASEMENT
  - UE= UTILITY EASEMENT
  - IDE= INTERIOR DRAINAGE EASEMENT
  - DE= DRAINAGE EASEMENT
  - WMT= WATER MANAGEMENT TRACT
  - GC= GOLF COURSE
  - ORB= OFFICIAL RECORD BOOK
  - P.B.= PLAT BOOK
  - PG.= PAGE
  - LB= LICENSED BUSINESS
  - R= RADIAL
  - ☒ = PERMANENT REFERENCE MONUMENT "LB 4318" (UNLESS OTHERWISE NOTED)
  - = PERMANENT CONTROL POINT

**CURVE TABLE**

CURVE	DELTA	LENGTH	RADIUS	CHORD BEARING	CHORD DISTANCE
C4	6°24'40"	13.99	125.00'	N87°19'00"W	13.98
C5	75°29'30"	125.17	95.00'	S51°43'55"W	116.31
C6	13°34'50"	181.56	766.00'	N20°46'35"E	181.14
C7	18°01'00"	166.66	530.00'	S04°58'40"W	165.97

**MADISON GREEN-PLAT No.1 PARCEL "F" AND PARCEL "J", REPLAT**

**NICK MILLER, INC.**  
 Surveying & Mapping Consultants

SUITE 105  
 2560 RCA BLVD.  
 PALM BEACH GARDENS, FLORIDA 33410  
 TEL 561 627-5200 FAX 561 627-0983  
 D.B.P.R. LICENSED BUSINESS No. 4318

SHEET NO. **6**

SCALE: 1" = 50'

DATE: JUNE 2001

JOB NO. 99043EC

FILE: Replat Pod F.dwg